

CURVE TUBE HORIZONTAL BEND 20 x 20mm



Linear Flexible Light Source. Compact size, IP67 and resistant to solvent & saltwater.
Suitable for internal & external applications.

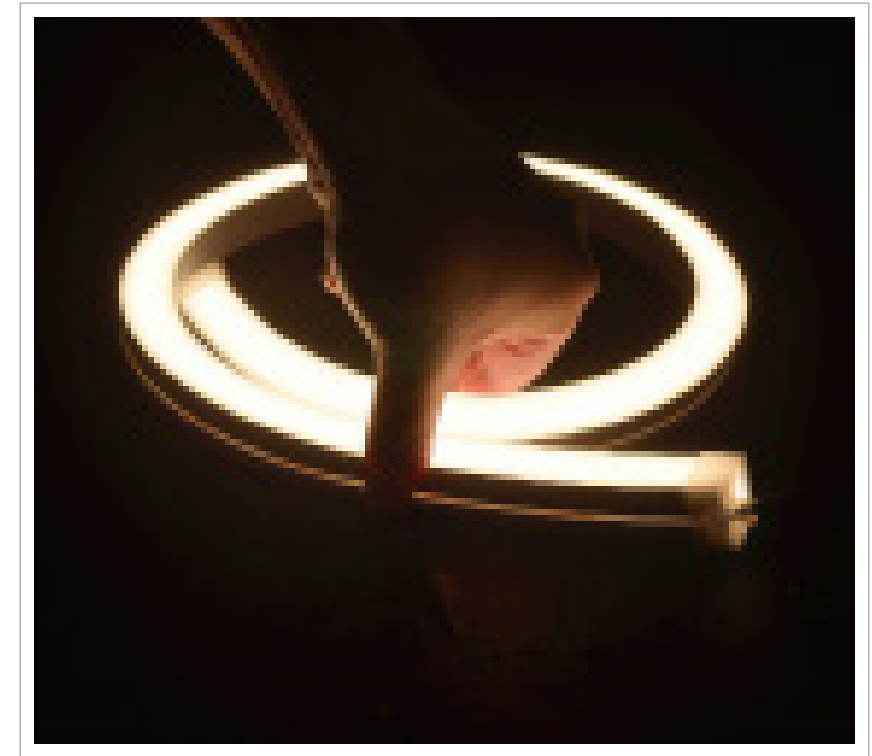
TECHNICAL DATA

Input Power	24V DC
CRI	> 90
IP Rating	IP67
Bend Radius	Horizontal - 300mm Min. Radius
Max. Length	5m (single input power 10W and 15W) 10m (single input power 5W)
Dimensions	20 x 20mm
Dimming Type	Triac Dali Bluetooth
Watts per meter	5W 10W 15W

CCT & Lumens per meter	5W	10W	15W
2700K - 239lm	2700K - 461lm	2700K - 662lm	
3000K - 225lm	3000K - 432lm	3000K - 617lm	
4000K - 242lm	4000K - 467lm	4000K - 424lm	
5000K - 241lm	5000K - 466lm	5000K - 665lm	
6000K - 240lm	6000K - 464lm	6000K - 671lm	
RGB - 150lm	RGB - 290lm	RGB - 420lm	
RGBW- 160lm	RGBW- 300lm	RGBW- 420lm	
CCT (2700K- 5400K)	251lm	693lm	693lm

Mounting	Stainless Steel Clip Aluminium Profile
Connectors	Integral End Cap (Front / Side / Bottom) Silicone End Cap (Front / Side / Bottom)

Product Code	DL-CTHS-2020
--------------	--------------



Indoor/Outdoor | Recessed | Architectural Details

DL-CTHS-2020

PRODUCT CODE



CONNECTION & MOUNTING

INTEGRAL END CAP (IC)



END CABLE (EC)

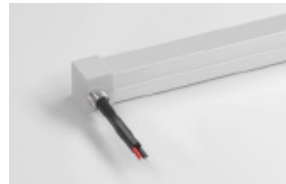


SIDE CABLE (SC)

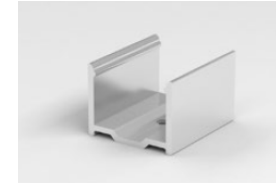


BOTTOM CABLE (BC)

SILICONE END CAP (SC)



ALUMINIUM MOUNTING CLIP



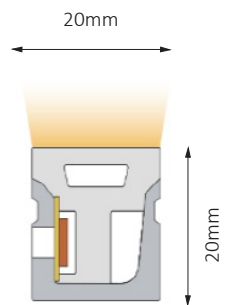
Aluminium Mounting Clip
23mm (W) x 17mm (H)

ALUMINIUM MOUNTING CHANNEL

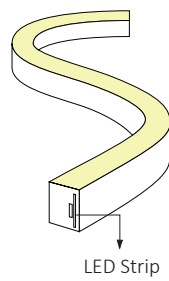


Aluminum Channel
23mm (W) x 17mm (H)
**available in 1m lengths*

TECHNICAL DRAWINGS

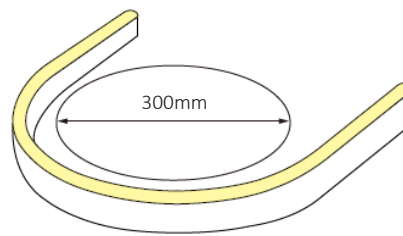


Horizontal Bend



LED Strip

Minimum Bending Radius 300mm



ORDERING GUIDE

Mode	IP	Curve Tube Length	Dimming	Colour (CCT)	Mounting	Connector
DL-CTHS-2020	IP67 IP67	5 metres 5m	Dali DD Bluetooth BB Triac TR	2700K 27K 3000K 3K 4000K 4K 5000K 5K 6000k 6K RGB RGB RGBW RGBW CCT CCT	Aluminium Mounting Clip Aluminium Channel	Integral Cap- End Cable ICEC Integral Cap- Side Cable ICSC Integral Cap- Bottom Cable ICBC Silicone Cap- End Cable SCEC Silicone Cap- Side Cable SCSC Silicone Cap- Bottom Cable SCBC

Code Example: DL-CTHS-2020 - 67 - 5M - DD - 27K

* Mounting Options are purchased separately as per codes below:

ALUMINIUM CLIP: DL-CTHS-MC-ALU-2020

ALUMINIUM CHANNEL: DL-CTHS-CH-2020

DUX LIGHTING

4 Villiers Drive, Currumbin
Queensland 4223
Phone: +61 7 5598 1216

Email: info@duxlighting.com.au

Web: www.duxlighting.com.au



CURVE TUBE RANGE

*Please visit our website for a comprehensive selection of our Curve Tube Range.
For all order inquiries, please don't hesitate to reach out to the address provided below.*