

CURVE TUBE VERTICAL BEND 10 x 10mm



Linear Flexible Light Source. Compact size, IP67 and resistant to solvent & saltwater. Suitable for internal & external applications.

TECHNICAL DATA

Input Power	24V DC
CRI	> 90
IP Rating	IP67
Bend Radius	Vertical - 80mm Min. Radius
Max. Length	5m (single input power) 10m (double input power)
Dimensions	10 x 10mm
Dimming Type	Triac Dali Bluetooth
Watts per meter	10W

CCT & Lumens per meter	2700K	735lm
	3000K	785lm
	4000K	830lm
	5000K	830lm
	6000K	810lm
	Red	330lm
	Green	920lm
	Blue	175lm
	Yellow	270lm
	Pink	345lm

Mounting	Aluminium Clip Aluminium Mounting Channel
Connectors	Integral End Cap (Front / Side / Bottom) Silicone End Cap (Front / Side / Bottom)

Product Code	DL-CTVS-1010
--------------	--------------



Indoor/Outdoor | Recessed | Architectural Details

DL-CTVS-1010
PRODUCT CODE



CONNECTION & MOUNTING

INTEGRAL END CAP (IC)



END CABLE (EC)

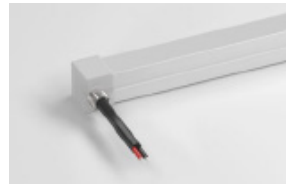


SIDE CABLE (SC)

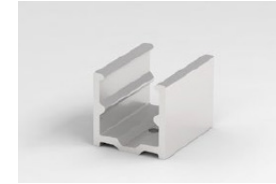


BOTTOM CABLE (BC)

SILICONE END CAP (SC)



ALUMINIUM MOUNTING CLIP



Aluminium Mounting Clip (AMC)
12.4mm (W) x 12.9mm (H)

ALUMINIUM MOUNTING CHANNEL



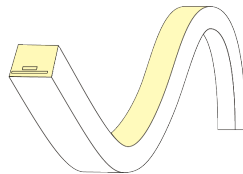
Aluminum Channel (AC)
12.4mm (W) x 13mm (H)
**available in 1m lengths*

TECHNICAL DRAWINGS

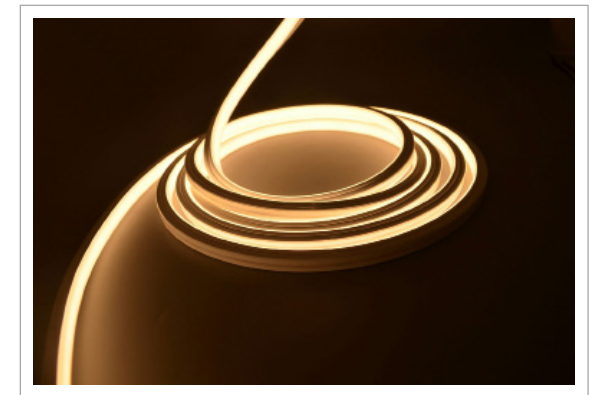
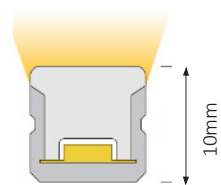
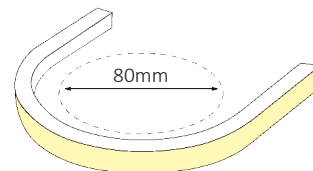
10mm



Vertical Bend



Minimum Bending Radius 80mm



ORDERING GUIDE

Mode	IP	Curve Tube Length	Dimming	Colour (CCT)	Mounting	Connector
DL-CTVS-1010	IP67 IP67	5m 5m 10m 10m Custom C	Dali DD Bluetooth BB Triac TR	2700K 27K 3000K 3K 4000K 4K 5000K 5K 6000k 6K Red R Green G Blue B Yellow Y Pink P	Aluminium Clip Aluminium Channel	Integral Cap- End Cable ICEC Integral Cap- Side Cable ICSC Integral Cap- Bottom Cable ICBC Silicone Cap- End Cable SCEC Silicone Cap- Side Cable SCSC Silicone Cap- Bottom Cable SCBC

Code Example: DL-CTVS-1010 - IP67 - 5M - DD - 27K

* Mounting Options are purchased separately as per codes below:

ALUMINIUM CLIP: DL-CTVS-MC-ALU-1010

ALUMINIUM CHANNEL: DL-CTVS-CH-1010

DUX LIGHTING

4 Villiers Drive, Currumbin
Queensland 4223
Phone: +61 7 5598 1216

Email: info@duxlighting.com.au

Web: www.duxlighting.com.au



CURVE TUBE RANGE

Please visit our website for a comprehensive selection of our Curve Tube Range.
For all order inquiries, please don't hesitate to reach out to the address provided below.